

# Technical Bulletin

Bulletin Number: 200 Revision Number: R-13

Release Date: July 1, 1977 Revision Date: October 10, 1997

**SUBJECT:** COUNTER - SNAP-IN

**MODELS AFFECTED:** All DNCB Models, Except MPC & SII Model Venders

**REASON:** To provide a counter kit which counts vends.

**ORDER:** 432,012,100.44 Counter Kit, Service

**Kit Contents:**

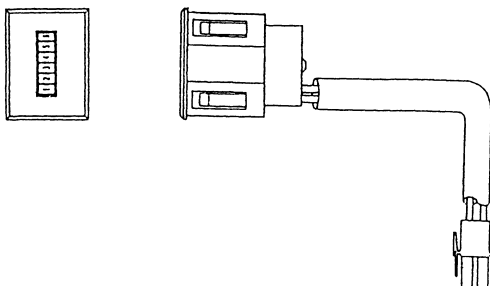
- 1 - 804,902,110.51 Snap-in counter
- 1 - 901,902,290.01 Tubing 3/8"IDx7" long vinyl
- 1 - 904,600,710.01 Plug 2-Way Mate-N-Lock

*\* To mount snap-in counter in venders without a mounting hole, order:*

- 1 - 572,050,370.13 Metal counter bracket
- 2 - 900,301,500.01 #8-18x1/2 phil pan screw

## BULLETIN INDEX

- A. Installation Instructions For:
  - Coke Landscape Venders serialized 0001-2949DK and up..... Page 2
  - All other DNCB Venders serialized 0001-2979BL and up ..... Page 2
- B. Installation instructions For:
  - All DNCB Coke Venders prior to 0001-2949BL..... Pages 3 & 4
  - All Other DNCB Venders prior to 0001-2979 ..... Pages 3 & 4
- C. For customers using a counter not supplied by Dixie-Narco ..... Page 5
- D. Mechanical Counter External Mounting..... Pages 6 & 7
- E. Counter Mounting Bracket, IEC ..... Page 7



Snap-In Counter  
432,012,100.34

**A**  
**COKE LANDSCAPE SERIALIZED 0001-2949DK AND UP**  
**ALL OTHER DNCB VENDERS SERIALIZED 0001-2979BL & UP**  
**EXCEPTION: KIT IS NOT USED IN MPC MODEL VENDERS**

**TO INSTALL SNAP-IN COUNTER:**

1. Unplug the vender.
2. Locate the area in which the counter is to be installed.
  - A. On venders serialized 0001-3125AN and up a rectangular hole is provided in one of the following areas: the door stiffener, the vertical bulkhead, or in the control panel. Next, push the snap-in counter into the rectangular hole.
  - B. On venders prior to 0001-3125AN, attach the snap-in counter bracket to the snap in counter. (See page 7.) Next, secure the counter to the vender using two #8-18x½ Phil Pan screws provided in the kit.
3. Plug the two way plug of the counter into the two-way cap of the door harness. (See figure 1 below).
4. Plug in the vender and test for proper operation.

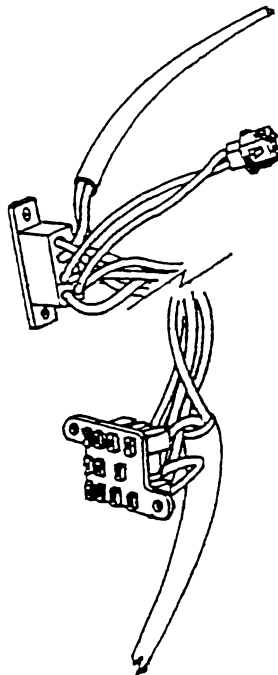


Figure 1

**B**  
**ALL DNCB COKE VENDERS PRIOR TO 0001-2949DK**  
**ALL OTHER DNCB VENDERS PRIOR TO DNCB 0001-2979BL**

**IMPORTANT: You will need a Counter Jumper to install the Snap-In Counter.**

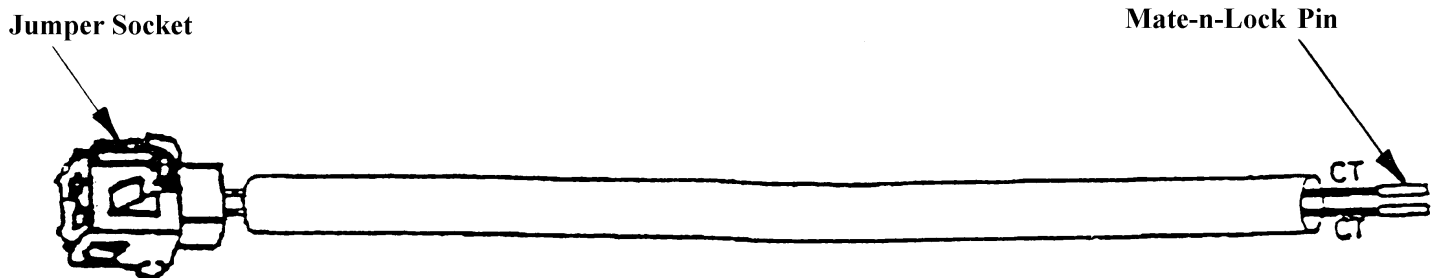


Figure 2  
Counter Jumper  
804,907,470.01

**TO INSTALL COUNTER:**

1. Unplug the vender.
2. Attach a Snap-In counter bracket to the Snap-In counter. (See page 7.)
3. Locate the area in which the counter is to be installed.
4. Secure the counter to the vender using two #8-18x½ Phil Pan screws provided in the kit.
5.
  - A. On 5, 6, 7 and 8 select venders - Insert the counter jumpers mate-n-lock pins into locations 8 & 9 of the nine-way plug at the bottom of the main door.  
(See figure 3, page 4.)
  - B. On 9 and 10 select venders - Insert the counter jumpers mate-n-lock pins into locations 8 & 9 of the fifteen-way cap at the bottom of the main door.  
(See figure 4, page 4.)
6. Plug the two way cap of the counter jumper in the two way plug of the counter.
7. Plug in the vender and test for proper operation.

# B

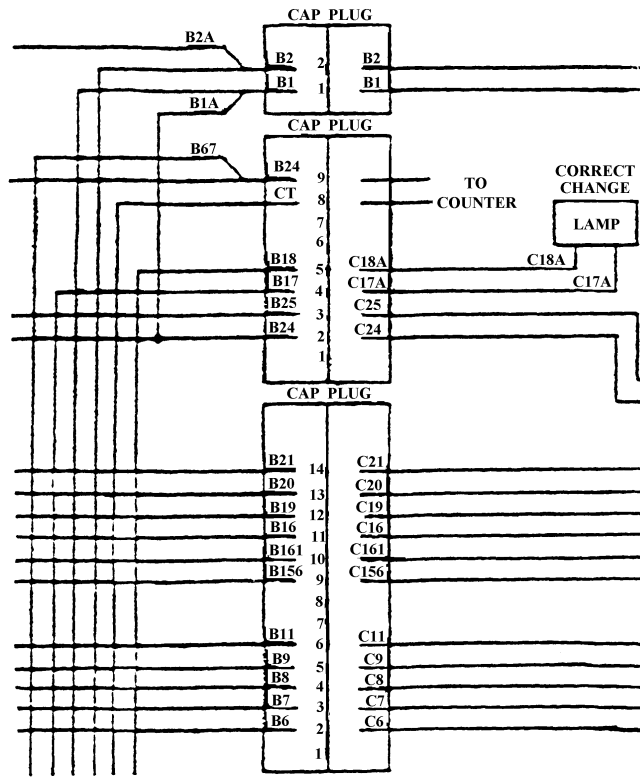


Figure 3

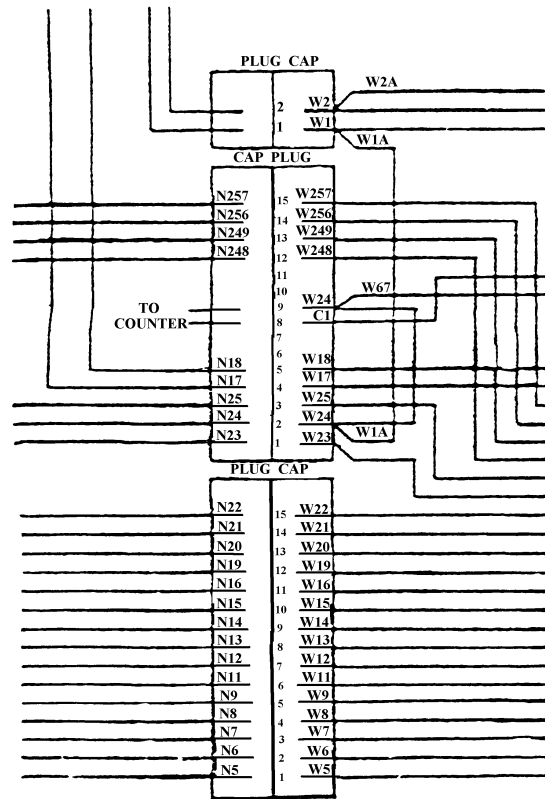


Figure 4

**C**  
**FOR CUSTOMERS USING THE COUNTER NOT SUPPLIED BY DIXIE NARCO**

**ORDER:** 804,904,280.11 Counter Lead Retrofit

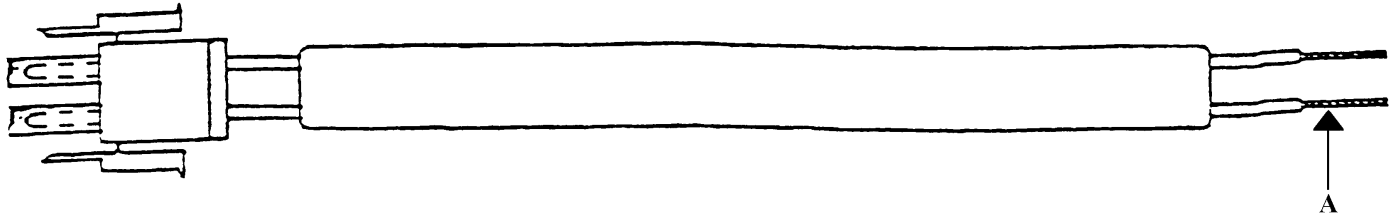


Figure 5

**TO INSTALL COUNTER LEAD RETROFIT:**

1. Secure the spliced wire ends to the counter. (See A, figure 5.)
2. Follow instructions on page 2 or page 3 according to the vender serial number.

**D**  
**MECHANICAL COUNTER EXTERNAL MOUNTING**

Note: Counter is mounted in a special validator filler plate.

**For Pepsi, Dr. Pepper, 7UP, and Generic venders, order:**

1 - 492,051,700.13 Assy., Filler Plate w/ Counter - Pepsi & Generic

Includes:

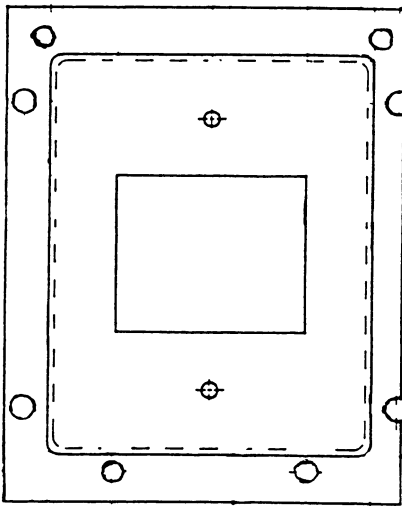
1 - 399,010,400.13	Assy. Plate Validator & Studs
1 - 492,050,240.03	Bracket, Counter
1 - 801,804,550.11	Price Window
1 - 902,001,000.21	Gasket, Price Window
1 - 804,902,110.11	Counter
2 - 900,800,500.01	Keps Nut, #8-32

**For Coca-Cola venders, order:**

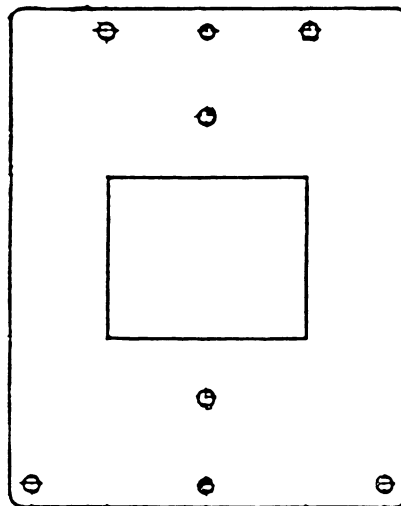
1 - 492,051,800.13 Assy., Filler Plate w/ Counter - Coke

Includes:

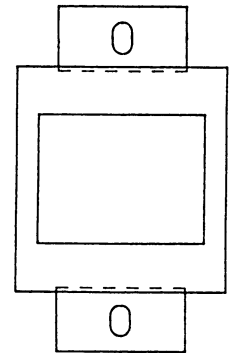
1 - 432,015,200.03	Assy. Plate Validator and Studs
1 - 492,050,240.03	Bracket, Counter
1 - 801,804,550.11	Price Window
1 - 902,001,000.21	Gasket, Price Window
1 - 804,902,110.11	Counter
2 - 900,800,500.01	Keps Nut, #8-32



Ass'y. Plate Validator & Studs  
399,010,400.13



Ass'y. Plate Validator & Studs  
432,015,200.03



Bracket, Counter  
492,050,240.03

## SNAP-IN COUNTER / SNAP-IN COUNTER MOUNTING BRACKET

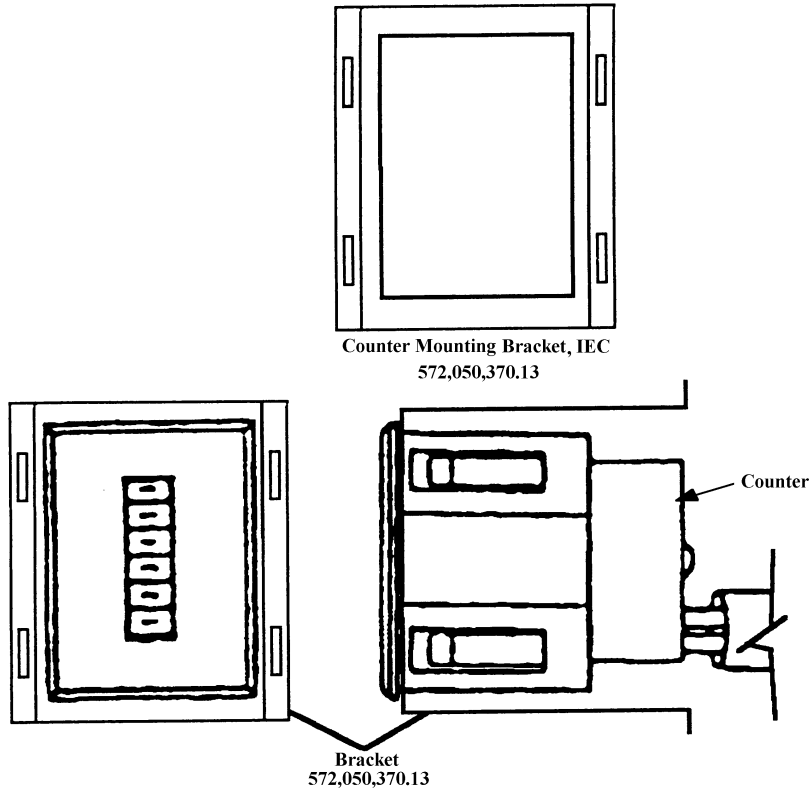
### To Install:

1. Unplug the vender.
2. Remove the existing validator hole filler plate.
3. Install the new assembly plate validator and studs.
4. Install the price window gasket to the price window on the side that will make contact with the main door.
5. Install the price window with the gasket to the assembly plate validator and stud.

**Important: Do not secure at this time.**

6. Install the snap-in counter in the counter bracket.
7. Install the counter bracket with the counter to the assembly plate validator and stud.
8. Secure with two #8-32 keps nuts.
9. To plug in the counter, follow the installation instructions in section A or B of this bulletin.

### E



### To Install:

1. Unplug the vender.
2. Install the snap-in counter in the counter bracket so the body of the counter sits inside the bracket.
3. Locate an existing self drilling screw in the bulkhead in the area you wish to mount the bracket. Remove the self driller.
4. Place the bracket with the counter installed in position and secure with the screw removed in step 3.